

HENDON

NW9

LOWER

Study	3.24m x 1.95m	10'7" x 6'5"
-------	---------------	--------------

UPPER

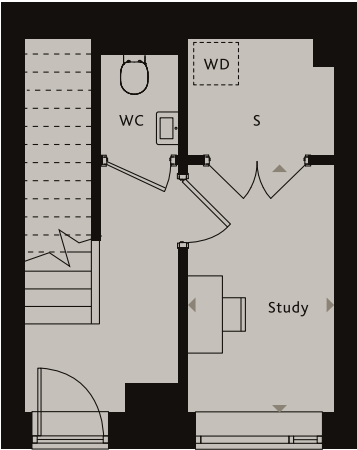
Living/Kitchen/Dining	6.27m x 3.10m	20'6" x 10'2"
Bedroom 1	4.10m x 3.60m	13'5" x 11'9"
Terrace 1	3.99m x 1.51m	12'9" x 4'11"
Terrace 2	4.31m x 1.90m	14'1" x 6'3"

Ceiling heights may vary with areas below 2.3 meters, please speak to a member of the sales team for more information.

Floorplans shown for Square Roots Hendon are for approximate measurements only. Exact layouts and sizes may vary. All measurements may vary within a tolerance of +/-50mm. The dimensions are not intended to be used for carpet sizes, appliance sizes or items of furniture. Furniture layouts are indicative only. Kitchen layout indicative only. Please ask Sales Consultant for further information.

DUPLEX 7

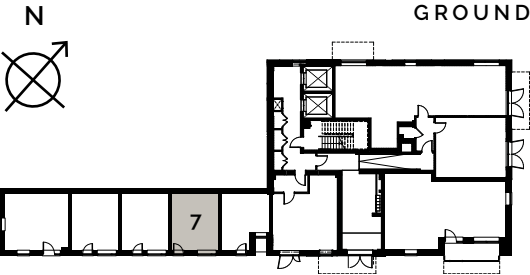
CATKIN ROAD GROUND & 1ST FLOOR



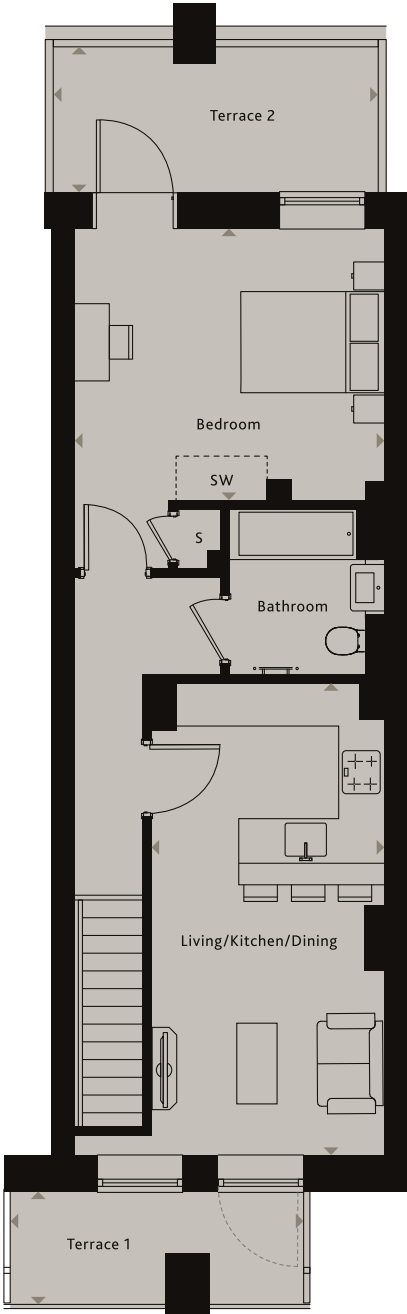
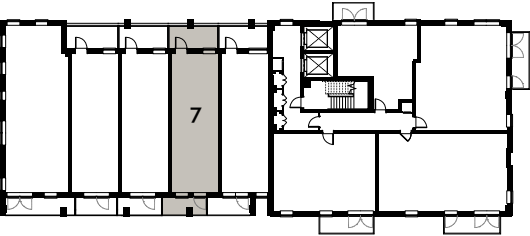
LOWER

KEY

- ◄► Measurement Points
- ES Ensuite
- SC Service Cupboard
- SW Space for Wardrobe
- WD Washer Dryer
- S Store Cupboard



1ST FLOOR



UPPER