

HENDON  
NW9

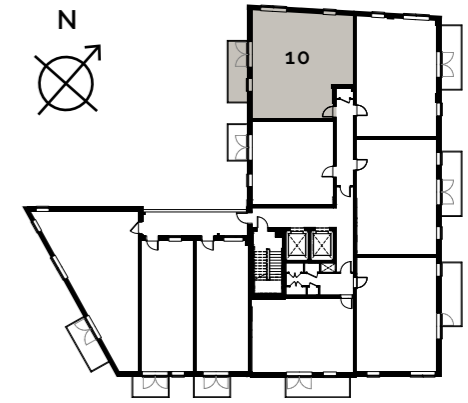
Living/Kitchen/Dining	5.75m x 5.15m	18'10" x 16'11"
Bedroom 1	5.15m x 3.60m	16'11" x 11'9"
Bedroom 2	3.88m x 3.69m	12'8" x 12'1"
Balcony	5.38m x 1.74m	17'8" x 5'8"

Ceiling heights may vary with areas below 2.3 meters, please speak to a member of the sales team for more information.

Floorplans shown for Square Roots Hendon are for approximate measurements only. Exact layouts and sizes may vary. All measurements may vary within a tolerance of +/-50mm. The dimensions are not intended to be used for carpet sizes, appliance sizes or items of furniture. Furniture layouts are indicative only. Kitchen layout indicative only. Please ask Sales Consultant for further information.

# APARTMENT 10

REDWING COURT 1<sup>ST</sup> FLOOR



## KEY

- ◄► Measurement Points
- ES Ensuite
- SC Service Cupboard
- SW Space for Wardrobe
- WD Washer Dryer
- S Store Cupboard