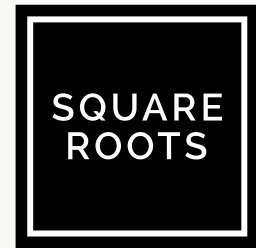


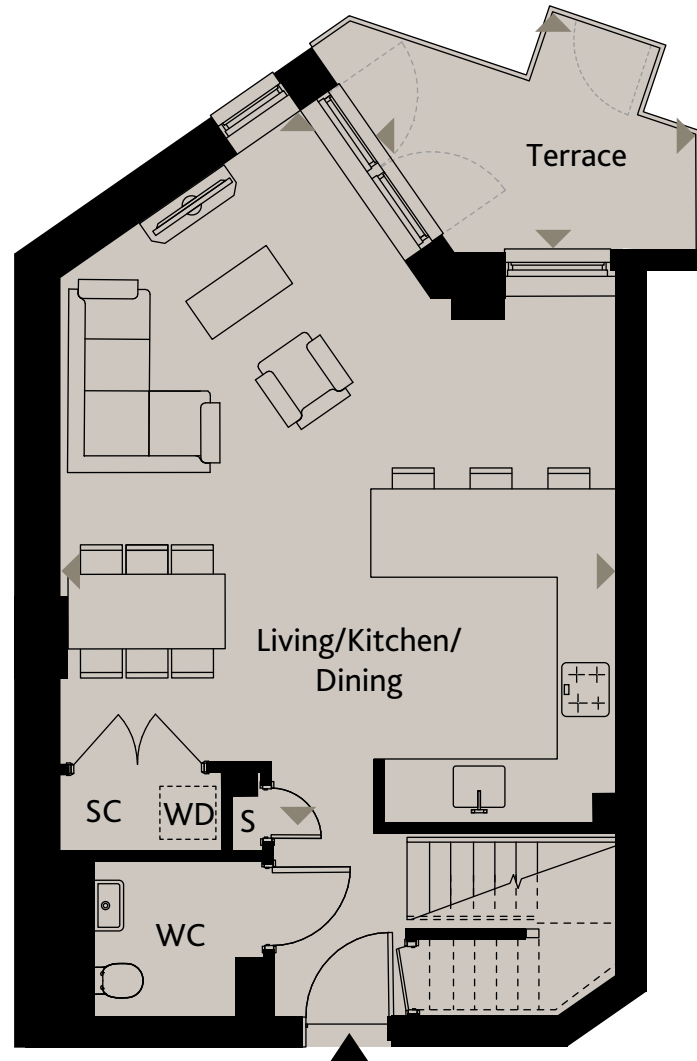
DUPLEX 003

WATERWAY GROUND FLOOR & 1ST FLOOR

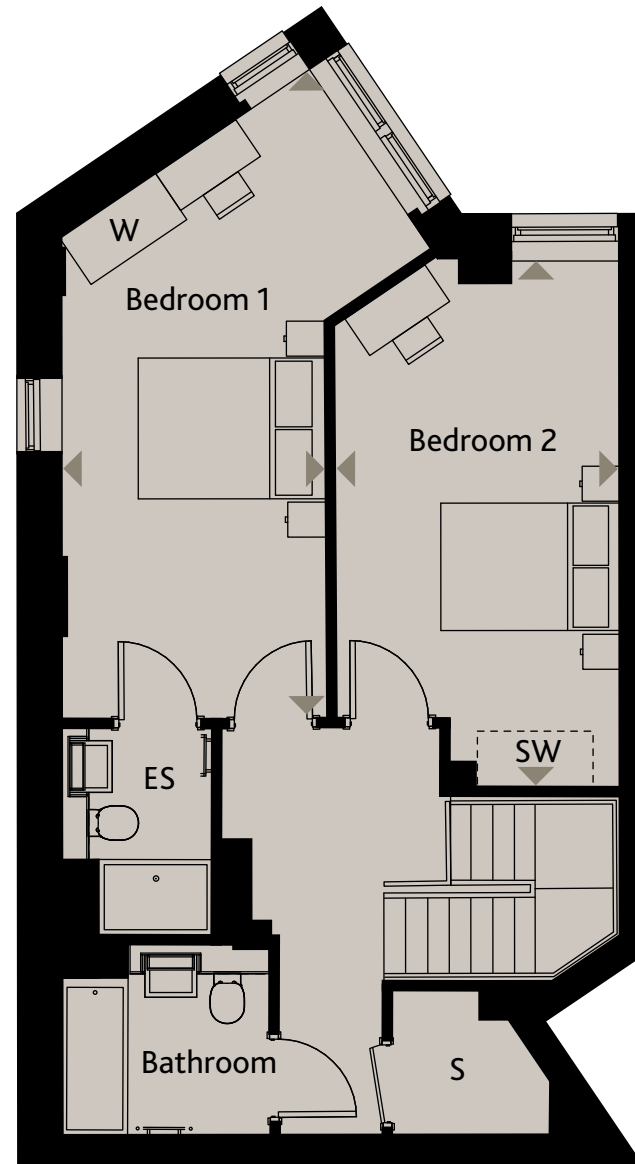


LEWISHAM

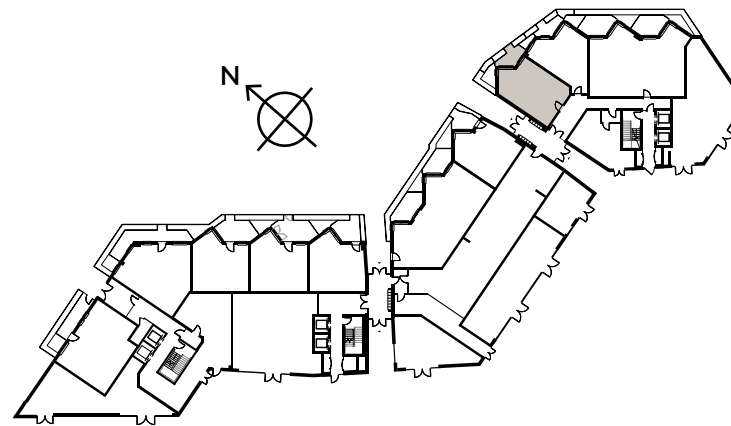
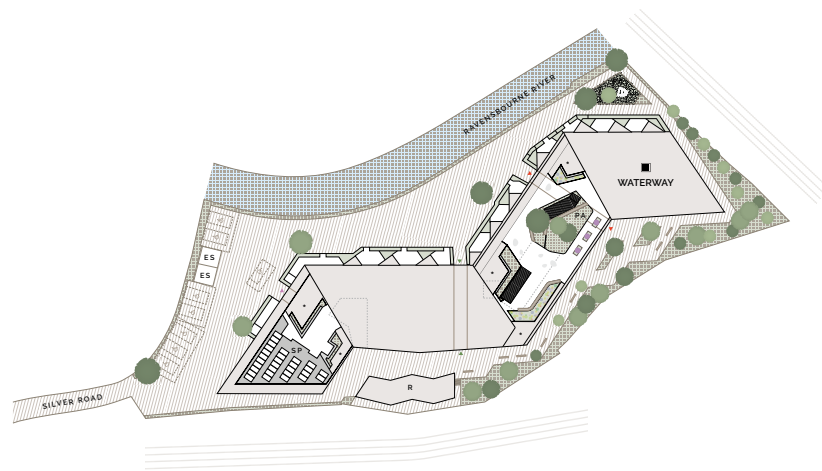
SE13



LOWER



UPPER



LOWER FLOOR

Living/Kitchen/Dining 7.58m x 5.93m 24'10" x 19'5"

Terrace 3.33m x 2.51m 10'11" x 8'3"

UPPER FLOOR

Bedroom 1 6.83m x 2.82m 22'5" x 9'3"

Bedroom 2 5.58m x 3.00m 18'3" x 9'10"

Ceiling heights may vary with areas below 2.3 meters, please speak to a member of the sales team for more information.

Floorplans shown for Square Roots Lewisham are for approximate measurements only. Exact layouts and sizes may vary. All measurements may vary within a tolerance of +/-50mm. The dimensions are not intended to be used for carpet sizes, appliance sizes or items of furniture. Furniture layouts are indicative only. Kitchen layout indicative only. Please ask Sales Consultant for further information.