

APARTMENT 102

BANKSIDE 1ST FLOOR

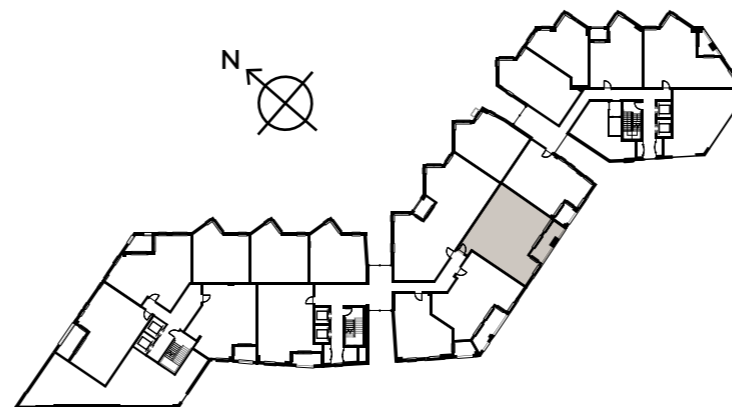
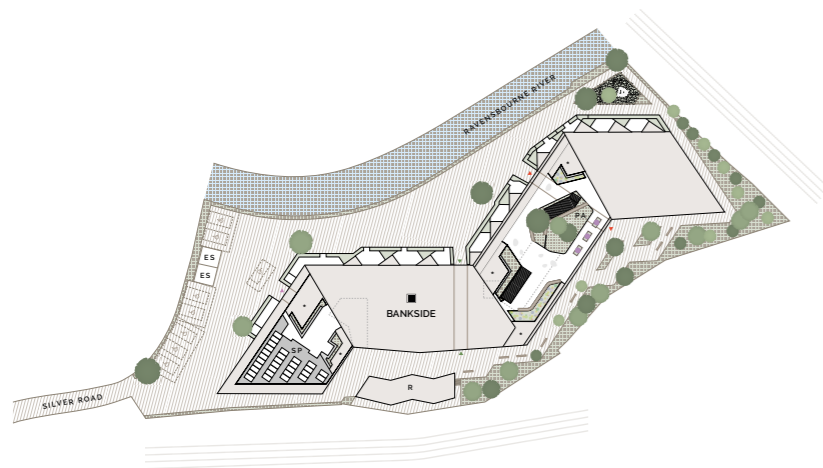


LEWISHAM

SE13



Living/Kitchen/Dining	7.66m x 3.48m	25'1" x 11'5"
Bedroom 1	5.64m x 3.12m	18'6" x 10'3"
Bedroom 2	5.14m x 2.40m	16'10" x 7'10"
Balcony	5.40m x 1.80m	17'8" x 5'10"



Ceiling heights may vary with areas below 2.3 meters, please speak to a member of the sales team for more information.

Floorplans shown for Square Roots Lewisham are for approximate measurements only. Exact layouts and sizes may vary. All measurements may vary within a tolerance of +/-50mm. The dimensions are not intended to be used for carpet sizes, appliance sizes or items of furniture. Furniture layouts are indicative only. Kitchen layout indicative only. Please ask Sales Consultant for further information.